



REVO 3.3 ROLL CAGE KIT

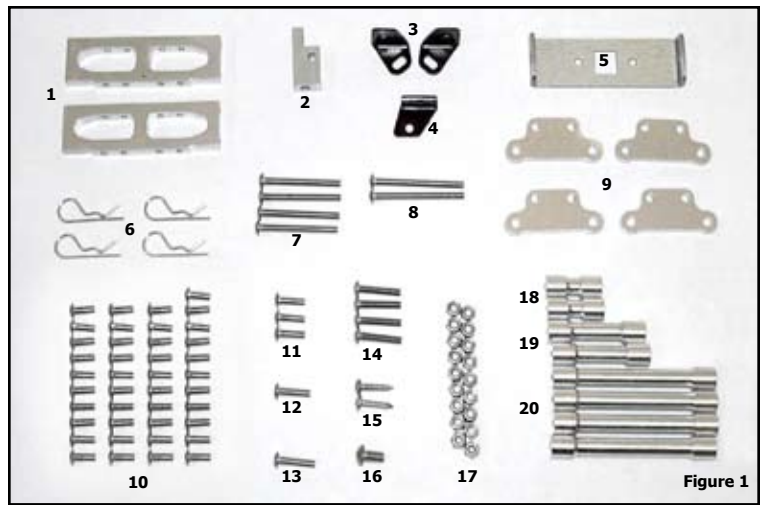
22601 N. 17th AVE.
SUITE 120
PHOENIX, AZ. 85027
PHONE 480.609.7233
FAX 480.3159713
WWW.RC-SOLUTIONS.COM



22601 N. 17TH AVE., SUITE 120
 PHOENIX, AZ. 85027
 PHONE 480.609.7233
 FAX 480.315.9713
 WWW.RC-SOLUTIONS.COM

REVO 3.3 ROLL CAGE KIT

Read these instructions and review the photos before you start. Use your factory owner's manual for reference. Attaching this roll cage requires drilling two holes in the chassis plate. You will need a drill and a 1/8" (3mm) and a 3/32" (2.5mm) drill bit. You will need a long 2.0mm ball-tip allen driver, needle-nose pliers, and medium strength thread lock compound, such as Loctite blue. Most truck bodies will need to be modified to fit around the cage. A razor knife or rotary cutting tool such as a Dremel, is needed for these modifications.



- | | |
|---|--------------------------------|
| 1. (2) CAGE MOUNT 1 | 12. (1) M3x12 BHCS |
| 2. (1) CAGE MOUNT 2 | 13. (1) M3x14 BHCS |
| 3. (2) CAGE MOUNT 3 | 14. (4) M3x16 BHCS |
| 4. (1) CAGE MOUNT 4 | 15. (2) M2.9x13 SHEET SCREWS |
| 5. (1) STARTER PLUG BRACKET | 16. (1) M4x8 BHCS |
| 6. (4) HAIRPIN BODY CLIPS | 17. (18) M3 LOCK NUTS |
| 7. (4) M3x30 BHCS (Button Head Cap Screw) | 18. (2) SHORT CAGE SPACERS |
| 8. (2) M3x35 BHCS | 19. (2) MEDIUM CAGE SPACERS |
| 9. (4) BUMPER BRACKETS | 20. (4) LONG CAGE SPACERS |
| 10. (41) M3x8 BHCS | 21. (2) CAGE RAILS (Not Shown) |
| 11. (3) M3x10 BHCS | 22. (2) CAGE HOOPS (Not Shown) |
| | 23. (1) CAGE BRACE (Not Shown) |

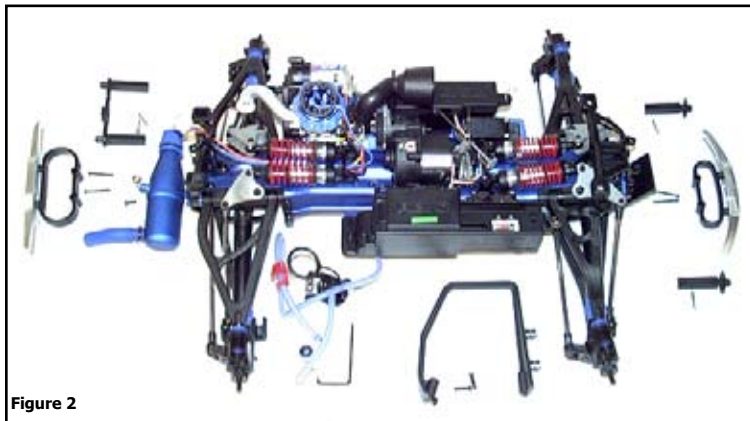


Figure 2

1. Remove the body, wheels, front and rear bumpers, front and rear body mount posts, exhaust muffler, fuel tank and roll bar, as shown in *Figure 2*.



Figure 3

2. Cut out the rear body post holders flush with the inside edge of the square as shown in *Figure 3*. Do this on the rear only. Re-install the muffler.



Figure 4

3. Use the 1/8" drill bit to drill through the bumper mount tabs front and rear, as shown in *Figure 4*.

4. Attach *Bumper Brackets* to both *Cage Mount 1* parts with *M3x8 BHCS* as shown in *Figure 5*.

Use thread lock liquid on metal-to-metal screws. Push the *Cage Mounts* into the original bumper mount locations front and rear, with the machined reliefs down. Secure to bumper mounts with (4) *M3x8 BHCS*.

5. Assemble the cage as shown in *Figure 6*. There is a left and right *Rail*, a front and back *Hoop*, and a *Brace*. Hold the two *Rails* in one hand and put the *Back Hoop* in position first. Switch the two *Rails* if necessary to locate the *Rear Hoop* as shown. Then carefully work the *Front Hoop* into place. Do not bend or force the parts together. Attach the (4) *Long Spacers* with *M3x8 BHCS*, and attach the *Starter Bracket* as shown with *M3x10 BHCS* and *Lock Nuts*. Attach the *Brace* with (2) *Medium Spacers*, with *M3x35 BHCS* going through the *Short Spacers* from the right side. Attach *Cage Mount 2* with (1) *M3x12*, (1) *M3x14 BHCS* and *Lock Nuts*; see *Figure 9* for close-up. Attach the (2) *Cage Mount 3* parts to the backside of the front hoop with *M3x8 BHCS* and *Lock Nuts*; leave all the mount screws slightly loose.



Figure 5

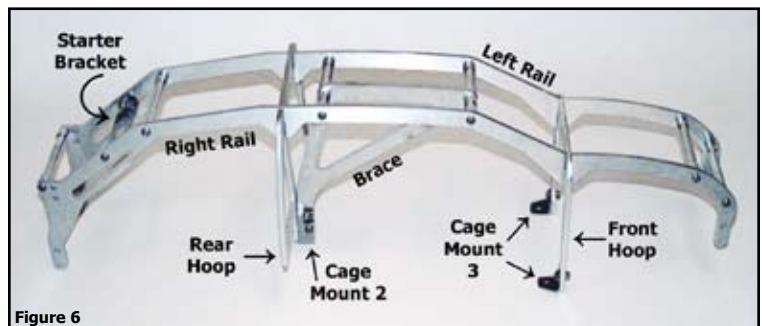


Figure 6

6. Attach the cage temporarily for marking holes to drill. Slide the cage onto the *Cage Mounts*, starting at the front end. Lower the cage into place until the *Cage Mount 3* parts are on top of the chassis plate as shown in *Figure 7*. Secure the cage in position with *M3x8 BHCS* into the *Cage Mount 1* parts front and rear. Scribe marks in the chassis plate for the *Cage Mount 3* screws.



Figure 7

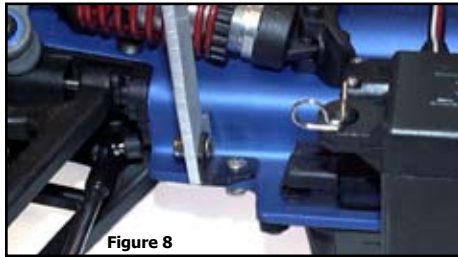


Figure 8

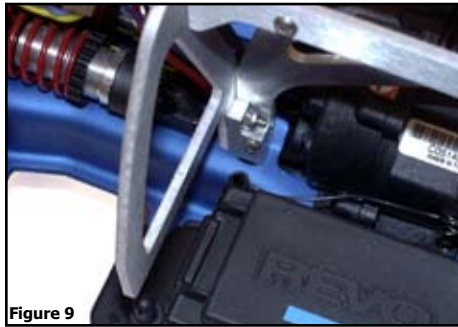


Figure 9



Figure 10



Figure 11



Figure 12

7. Remove the cage and drill (2) 1/8" holes in the chassis plate at the scribe marks. Put the cage back in position and re-attach it to the Cage Mount 1 parts.

8. Attach *Cage Mount 3* parts to the chassis plate with *M3x8 BHCS* from the top and secure with *Lock Nuts*, but leave them slightly loose for now.

9. Attach *Cage Mount 2* to the chassis plate from the underside with (1) *M4x8 BHCS* as shown in *Figure 9*. Re-install the fuel tank.

10. Attach *Cage Mount 4* to the *Back Hoop* with (1) *M3x8 BHCS* and *Lock Nut*, and through the chassis plate with (1) *M3x10 BHCS* and *Lock Nut* as shown in *Figure 10*. Go around and tighten all the cage mount and spacer screws.

11. Drill into the plastic of the rear body mount with a 3/32" drill bit through the small holes in the *Cage Rails*. Screw in (2) *M2.9x13 Sheet Screws* as shown in *Figure 11*.

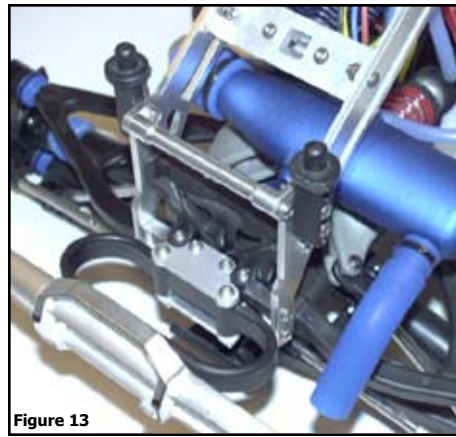


Figure 13

13. Cut the middle out of the rear body mount posts and shorten them by about half an inch. Drill out the holes to 1/8" diameter, and mount to the roll cage with (4) *M3x16 BHCS* and *Lock Nuts*, as shown in *Figure 13*. Replace the bumpers using (4) *M3x30 BHCS* and *Lock Nuts*.

14. Modifying the body. For a pickup style body, cut a rectangular hole in the bed as shown in *Figure 14*. Make the cut about 3-1/4" wide, centered in the body width. Start at the roof and rear window intersection, cutting down the window and back to approximately 2" from the back edge. Add clearance where the cage rails pass the rear window and antenna hole.

15. Making holes for body mount tabs. Put the body into position, centered left-to-right. Push the body against the body mount tabs with your thumb to create small marks or impressions in the plastic at the tab points. Cut or drill holes at the marks, as shown in *Figure 14*. Attach the body with hairpin body clips. **Now go play!**

Check out www.rc-solutions.com for all our R/C products.

NOTES:

1. This roll cage adds strength and protection to your REVO, but it is not indestructible. It will bend from some impacts, especially crashing on asphalt or concrete. Always drive the truck with a body on. Crashing with a body allows the truck to slide along the ground. Crashing without a body results in the cage digging in and "sticking" to the ground, which is much more likely to bend the cage.

2. All items returned to RC Solutions for credit will be charged a 10% restocking fee.

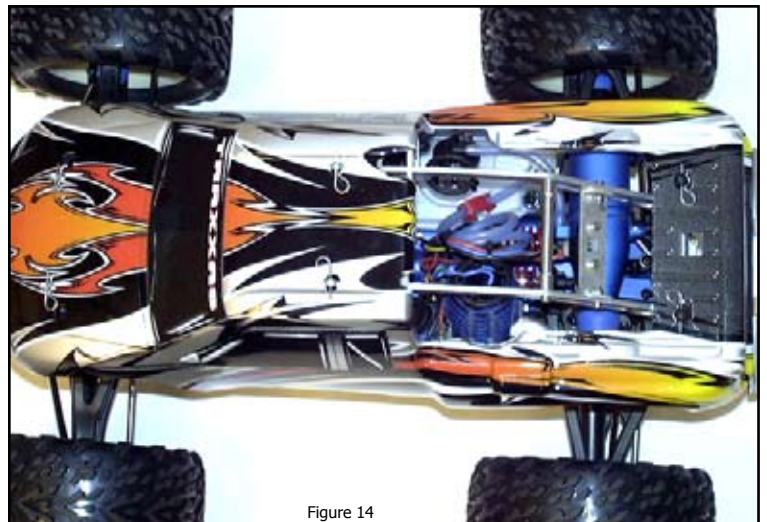


Figure 14